

Wire Rod Block Information

Morgårdshammar AB - Sales office Krefeld
 P.O. Box 101552
 D-47715 Krefeld, Germany
 Phone: +49 2151 81290
 Fax: +49 2151 6611795
 E-mail: office@mh-guides.de
 Internet: www.mh-guides.de

Morgårdshammar AB - Head office and Factory
 S-77782 Smedjebacken,
 Sweden
 Phone: +46 240 668500
 Fax: +46 240 668507
 E-mail: mh@morgardshammar.se
 Internet: www.morgardshammar.se

Customer name: _____

Date: _____

When enquiring and ordering, please specify in the fullest possible manner the conditions of use of the guides:

1. shape, dimensions and material of the bar to be guided;
2. rolling speed;
3. roll pass design (for guides utilisation);
4. W.R.B. module dimension data like marked on drawing of the next page (please specify module version H-V or Delta).

- Guide support: please indicate placement and dimension of threaded holes on module.
 The distance between the module surface and the rolling center line. The distance between modules.
5. Air/oil and cooling water connections (placement and threaded holes dimensions);
 6. Drawings of cooling manifolds and module top labyrinth flange is needed for a complete guide installation check.

In case of particular applications Danieli will request the copy of detailed modules drawings .

SHAPE, DIMENSIONS OF BAR TO BE GUIDED:

Stand	Fig.(see below)	W	H	GAP	T	R

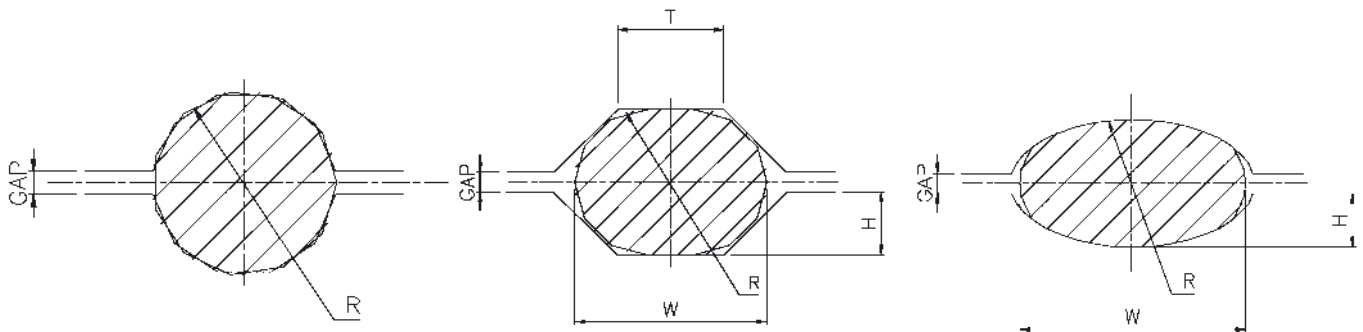
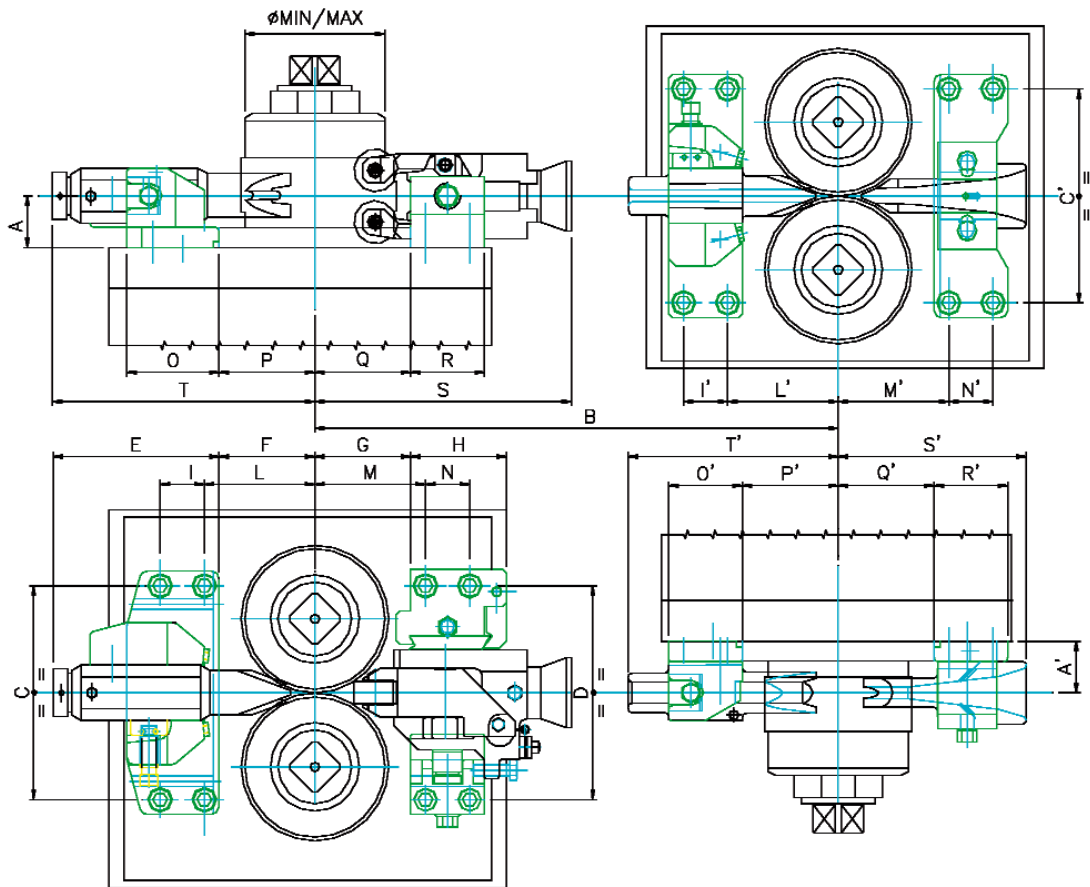


Fig.1

Fig.2

Fig.3

Wire Rod Block Information



DIMENSIONS OF WIRE ROD BLOCK MODULE (roller guides):

St.	A	B	C	D	E	F	G	H	I	L	M	N	O	P	Q	R	S	T	Ø_{\min}	Ø_{\max}
2																				
4																				
6																				
8																				
10																				

DIMENSIONS OF WIRE ROD BLOCK MODULE (static guides):

St.	A'	C'	I'	L'	M'	N'	O'	P'	Q'	R'	S'	T'
1												
3												
5												
7												
9												

