

Rolling Mill Information

Morgårdshammar AB - Sales office Krefeld
 P.O. Box 101552
 D-47715 Krefeld, Germany
 Phone: +49 2151 81290
 Fax: +49 2151 6611795
 E-mail: office@mh-guides.de
 Internet: www.mh-guides.de

Morgårdshammar AB - Head office and Factory
 S-77782 Smedjebacken,
 Sweden
 Phone: +46 240 668500
 Fax: +46 240 668507
 E-mail: mh@morgardshammar.se
 Internet: www.morgardshammar.se

Customer name: _____

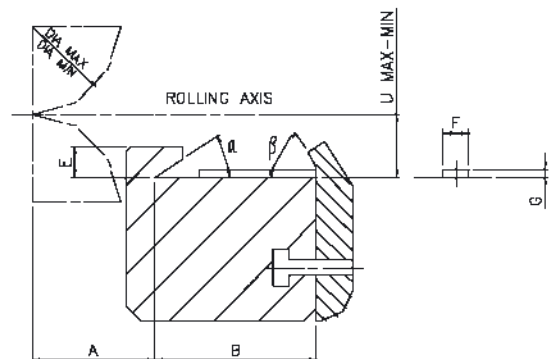
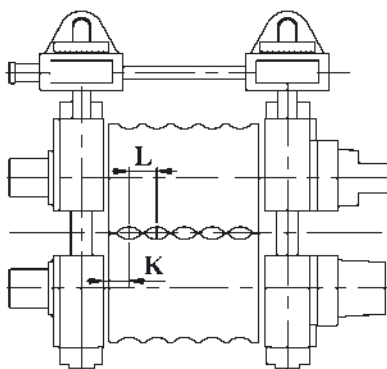
Date: _____

When enquiring and ordering, please specify in the fullest possible manner the conditions of use of the guides:

1. shape, dimensions and material of the rolled stock to be guided;
2. rolling speed;
3. roll pass design (for guides utilization);
4. dimensions of the rest bar and clamping indications;
5. type of stand on which the equipment is installed (vertical, horizontal, cantilever stands, etc.). Please specify useful spaces between rolling rolls edge and stand;
6. cooling manifold drawing.

In case of particular applications Danieli will request the copy of detailed drawings.

DIMENSIONS OF REST BAR:												
Stand	A	B	E	α°	β°	U_{min}	U_{max}	Dia.	F	G	K	L



Rolling Mill Information

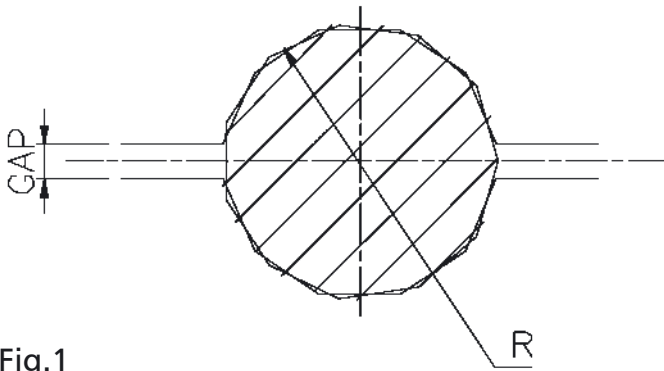


Fig.1

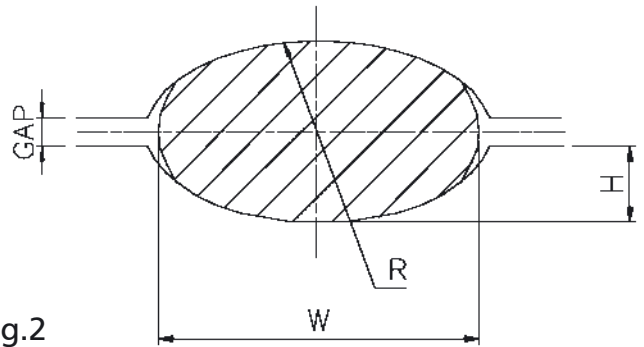


Fig.2

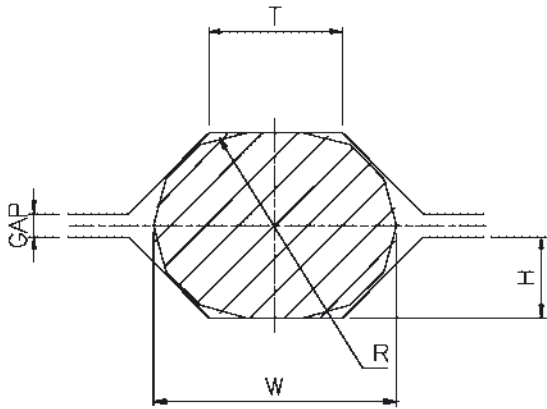


Fig.3

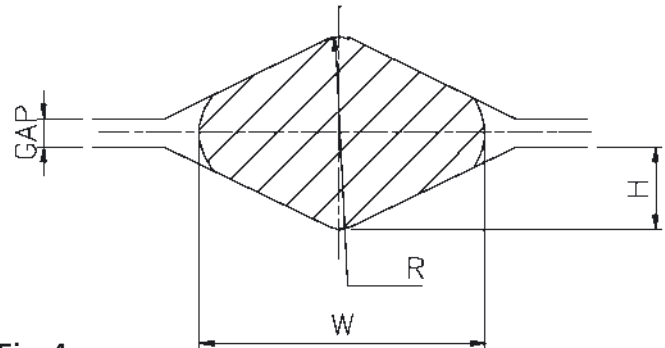


Fig.4



Fig.5

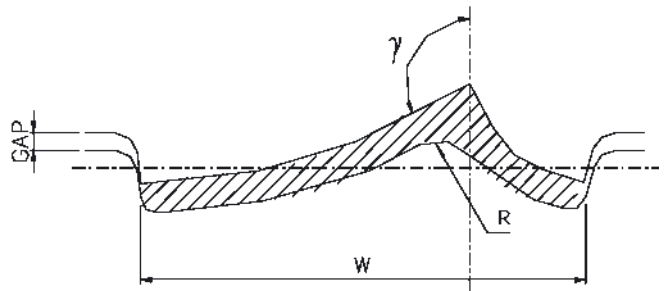


Fig.6

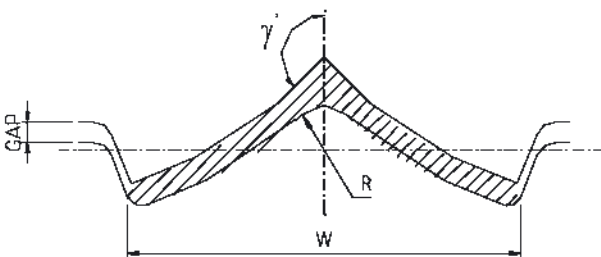


Fig.7

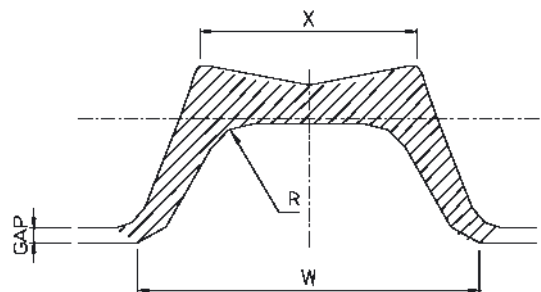


Fig.8

